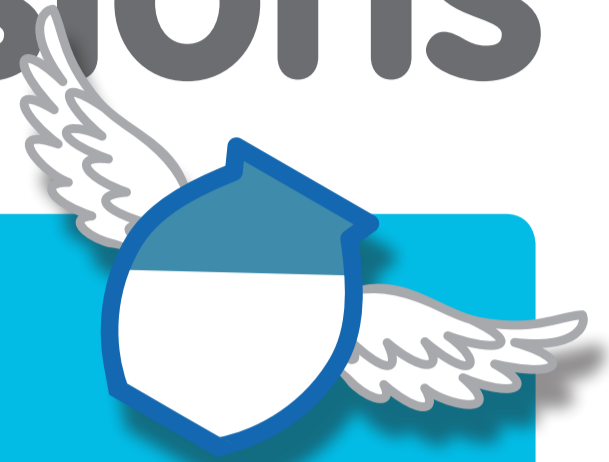


Don't lose track of your pensions



Nearly 2 in 5 people are unaware they can move their pensions¹

Almost half (47%) of UK workers say they don't know what their total pensions are worth¹



1 in 5 people have lost track of a pension¹

3 in 5 people don't know where all their pension details are¹



The average person switches employer 6 times¹

There are over £5bn worth of lost pensions²



Now, where did I put it?

Find out how to keep track of your pensions at:
www.thepeoplespension.co.uk/keep-track

For people, not profit

the
people's
pension